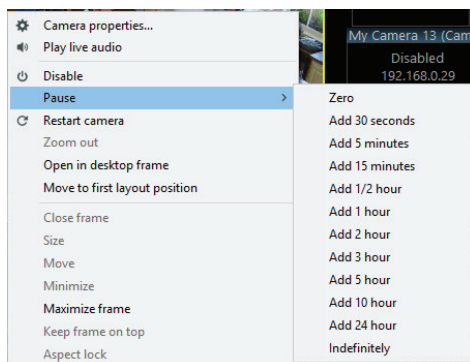


Unless the pause is indefinite, a countdown timer in minutes:seconds appears near the camera name in the header.

A camera may be paused or un-paused via a right-click menu:



It is also possible to change the camera’s pause state via the client phone apps.

PROFILES

A profile defines a mode of operation or a configuration. Only one global profile is active at any given time (although it may be overridden on a per-camera basis as described below). The simplest use for profiles can be “day” vs “night” or “work hours” vs “after hours.”

For example, using camera settings pages for Record, Trigger, and Alerts, you may configure profile 1 for recording and alerting on all motion, and profile 2 for recording only without alerts.

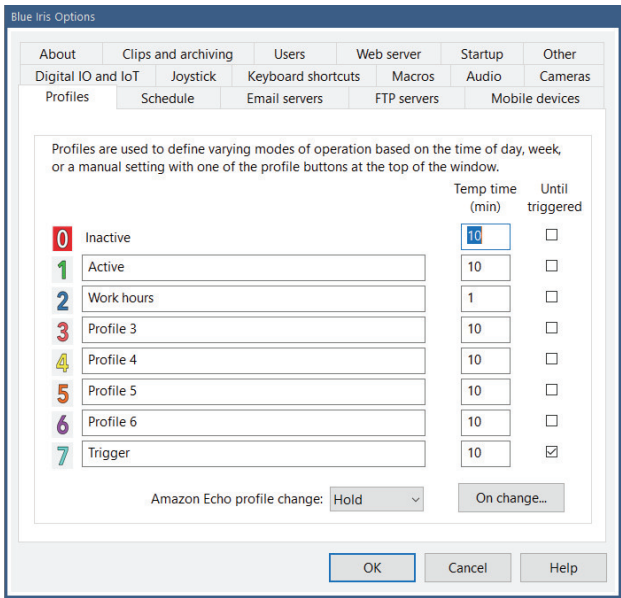
The original use for profiles in Blue Iris version 1 was to allow you to configure the motion detection differently based on the time of day. Generally at night, cameras operate in black and white, and trigger much differently than they do during the day. So in another example, you might use profile 1 for the night and profile 2 for the day.

Profiles may also be used arbitrarily—configure profile 7 perhaps to provide a sensitive trigger and to provide one specific type of alert. For example, you may be acutely or temporarily interested in someone entering through the garage and would like to receive a push notification for this, but then return to normal operation afterward.

There are 8 profiles, 0-7. Profile 1 is the default profile that will be used unless you otherwise change it with a schedule or override.

Profile 0 (the symbol ~ was used previously) has a special function, and is always called the “inactive” profile. When a camera’s effective profile is profile 0, it is considered *inactive* and this is very similar to using the camera pause function or the shield icon globally. When inactive however, the camera does nothing but display live video—and even that can be disabled with a setting found on the Schedule page in camera settings.

You may title the remaining profiles 1-7 on the Profiles page in Settings:



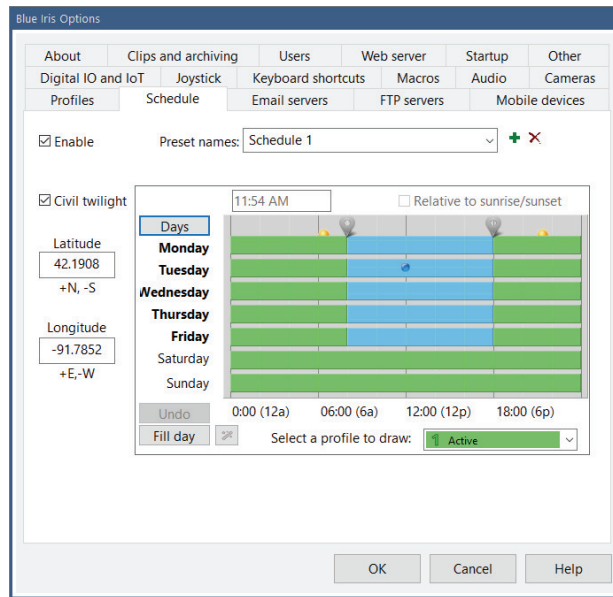
Each profile may be assigned a time to remain temporarily active before returning to the normally active profile (as defined by a schedule, see below). You may select that the temporary state is immediately cancelled when a camera is triggered.

A Beta Amazon Echo integration may be able to change the active profile, and you may be able to select a temporary or indefinite (hold) state.

Use the **On change** button to define an action set for execution whenever the active profile is changed.

SCHEDULES

A schedule is used to automate the active profile based on the time of day and/or week. If there is no active schedule, profile 1 is considered to be the active profile 24/7.



You may define a number of schedules. Common uses for schedules are for differing times of the year, such as vacation, summer, winter, etc.

A schedule is created by drawing it. You may pick any color (profile) to draw, and then click and drag anywhere in the schedule window to draw a filled rectangle in the selected color (profile). You can do this over and over again as required, but it's not necessary to be precise in your drawing, as you can easily adjust the start/stop times in other ways.

It's important to note that the "select a profile to draw" box is *not a setting itself*. It will not remain on your selection when you return to this screen. It is merely used to select the color that you currently drawing.

The blue dot represents the current day and time.

Editing the start/stop times

Use the Days button to toggle between selection of all days, week days, or weekend days. Instead, you may click on an individual day label, or hold the control key to select multiple days arbitrarily.

You will see "bubble location" icons appear at the top of the schedule showing times when the active profile changes. You may drag these icons to align these to 5 minute increments. If you bring two icons close enough together, they will merge together to eliminate one of the profile changes they represented. For even finer tuning, you may "select" an individual bubble icon by clicking on it, and then use the time edit box to enter a time directly.


A single level of “un-do” is possible by using the Undo button.

Setting times relative to sunrise or sunset


By setting your latitude and longitude at least approximately, you may take advantage of a feature to automatically move the preset transition bubbles along with the change in sunrise or sunset each day. First move a time bubble icon within proximity of either sunrise or sunset, and then select the “relative to sunrise/sunset” checkbox.


The “civil twilight” selection provides a larger period between sunset and sunrise (night).


The Magic button

 The Magic button exists to quickly generate common schedule layouts. These are inactive during work hours, inactive during work hours but only during weekdays, or multiple profiles for those same times. Click the magic button repeatedly to rotate between these. Once selected, you may customize the schedule as required.

RUN, HOLD AND TEMPORARY PROFILES

 When a schedule is running normally and the active profile is set automatically, this is called the “run” state and a green play icon is shown.

 When the active profile is overridden in some way, this is considered a temporary or transient state and a yellow pause icon is shown. The active profile will automatically revert and the schedule will return to the run state after an amount of time specified on the Profiles page in Settings. A value of ‘0’ for this setting will hold the profile indefinitely in the temporary state. You may click the pause icon to immediately return to the run state.

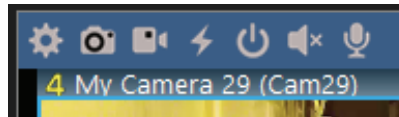
 The profile and schedule may also be in a “hold” state where a red stop icon is shown. The active profile will remain until you act, regardless of the timeout setting on the Profiles page. You may hold down either the run or pause icons to force the hold state. Click the stop icon to return to the run state.

CAMERA PROFILE AND SCHEDULE OVERRIDE

It's possible for any camera to be configured with its own profile schedule. This is done on the Schedule page in camera settings.

By default, a change to the global schedule will override all camera schedules and set all cameras to the same active profile. This however can be overridden on the camera's Schedule page. You may also choose for a camera to use the global schedule and active profile whenever the camera's schedule selects the "inactive" profile (clear).

And just like it's possible to temporarily override the global schedule by selecting it in a number ways, it's also possible to change an individual camera's profile temporarily. However, this is only possible via the client apps for iOS and Android at the time of this writing.



When a camera's effective active profile differs from the global profile, the active profile number will be shown in the camera's header.